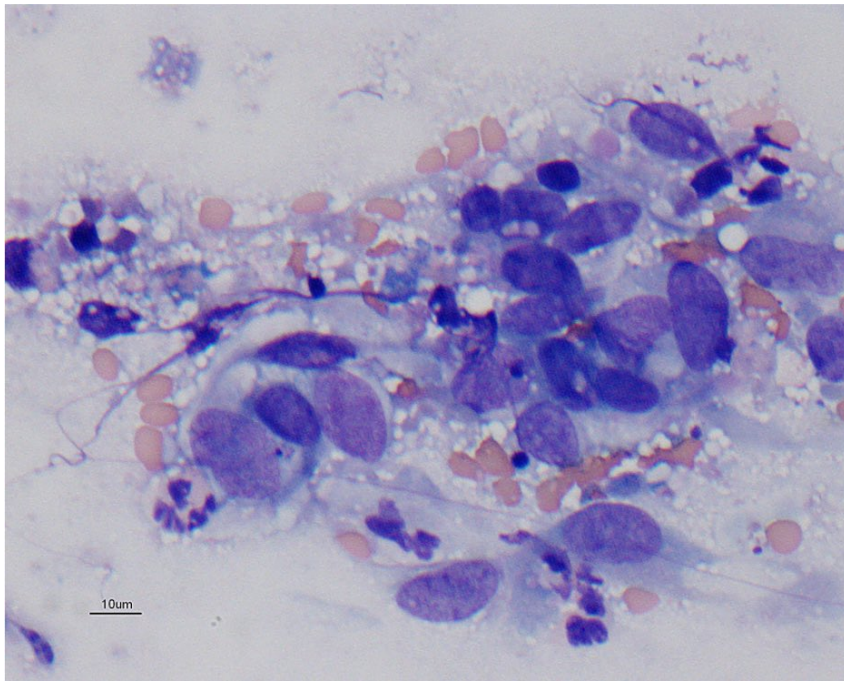




The Pet Oncologist

Splenic Cytology Quiz – Answers

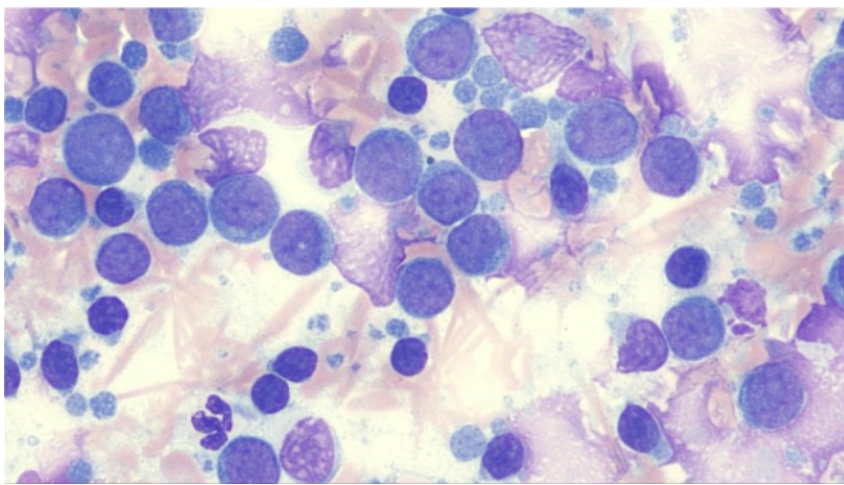
SLIDE 1



Diagnosis = Sarcoma.

Cytology slide shows predominately a pleomorphic population of malignant spindle cells in a background of red blood cells.

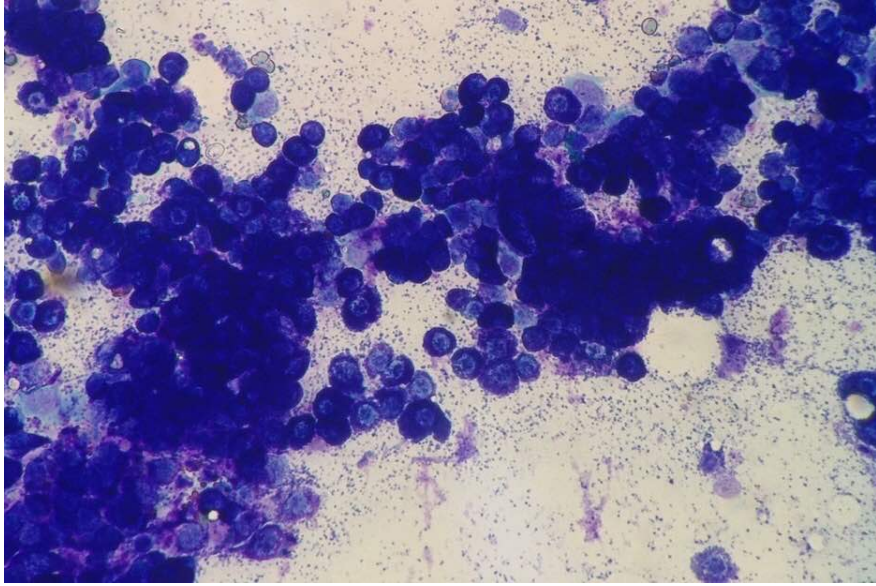
SLIDE 2



Diagnosis = Lymphoma.

Cytology slide shows predominately large lymphocytes (roughly 2 x diameter of RBCs). There are also several small lymphocytes and lots of broken cells (that should not be interpreted in the background).

SLIDE 3



Diagnosis = Mast cell tumour.

Cytology slides shows a monomorphic population of well-granulated mast cells.